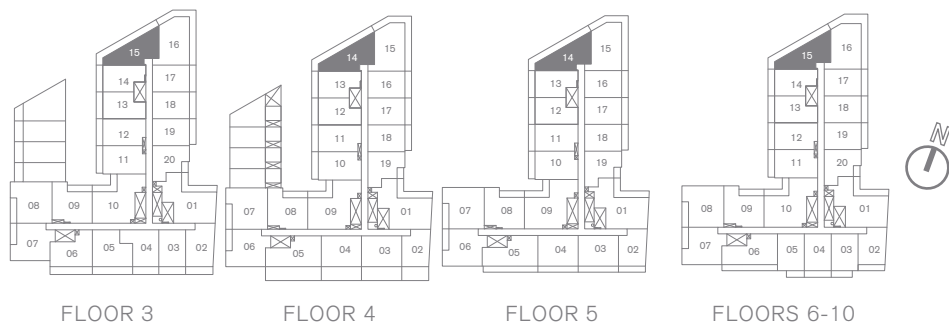
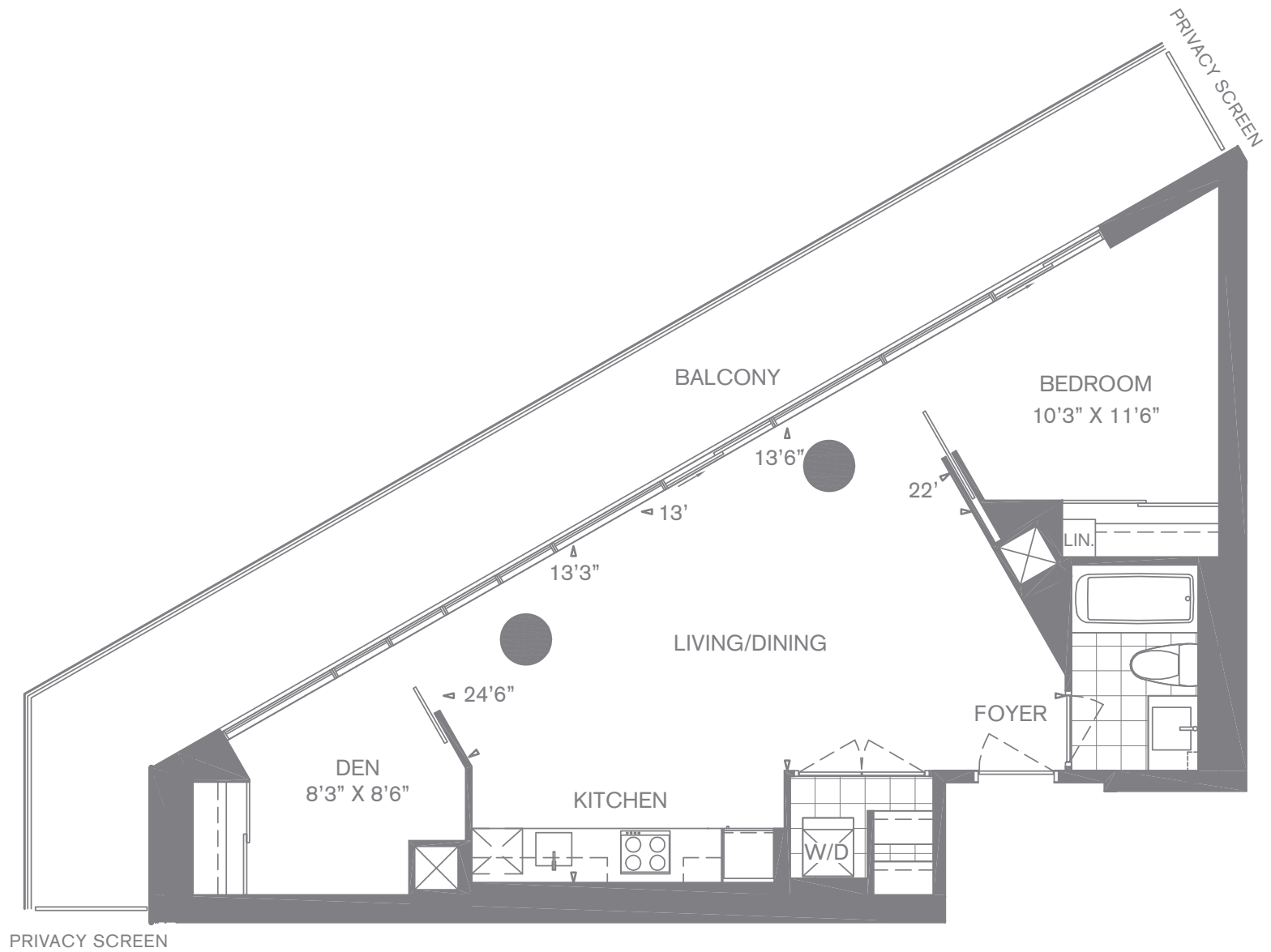


THE CAVALLI 709 SQ. FT.

ONE BEDROOM + DEN + BALCONY (260 SQ.FT.)

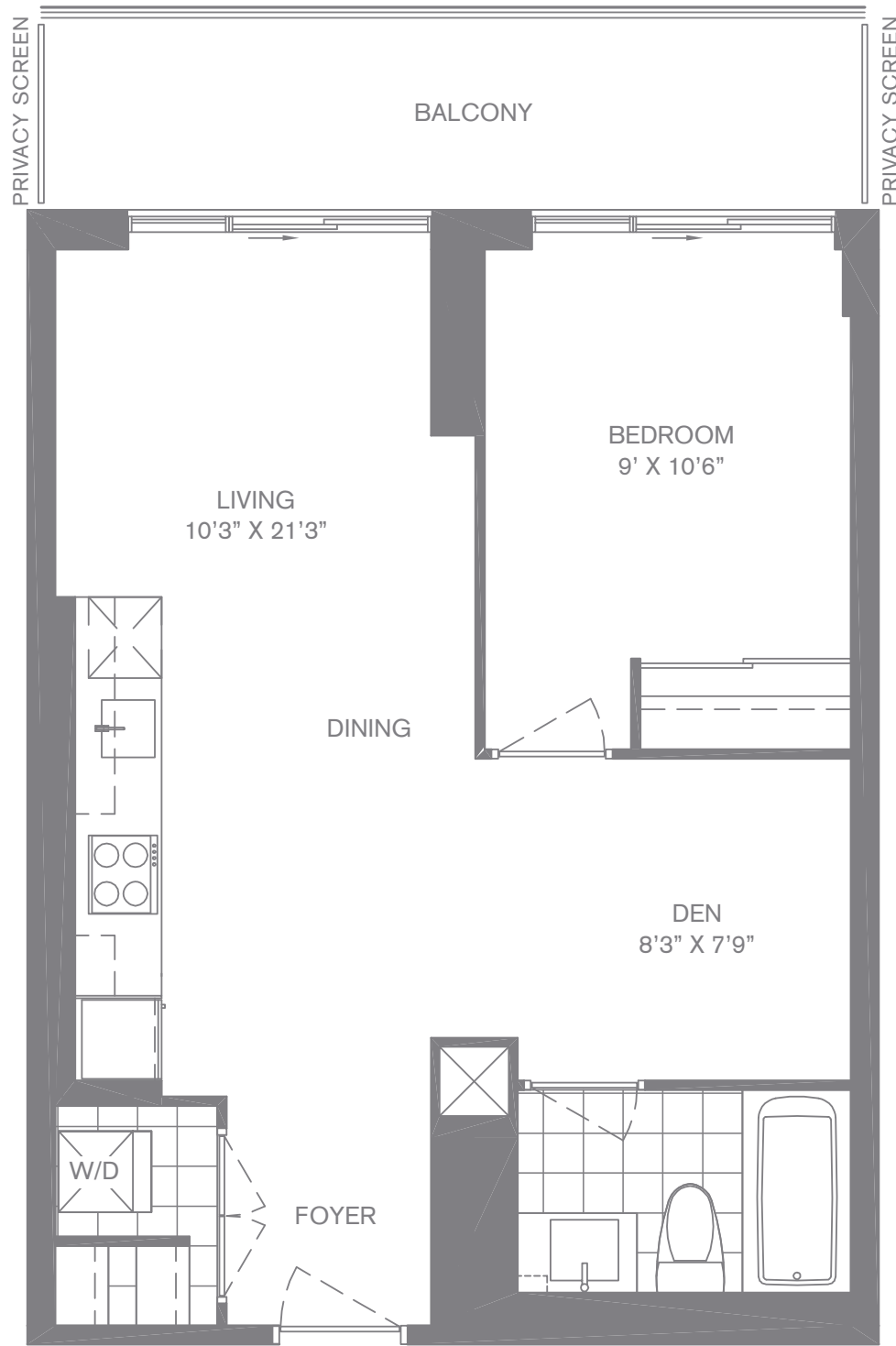


(1B+D-4)

Sizes and specifications are subject to change without notice. E.&O.E. Actual usable space may vary from any stated floor area. All dimensions are approximate and are subject to normal construction variances. Measurements of rooms set forth on any floor plan may be taken at the widest points of each given room (as if the room were a perfect rectangle), without regard for any cutouts. Floor measurements were calculated on the middle floor of typical floor plates.

THE FITZGERALD 569 SQ. FT.

ONE BEDROOM + DEN + BALCONY (85 SQ.FT.)

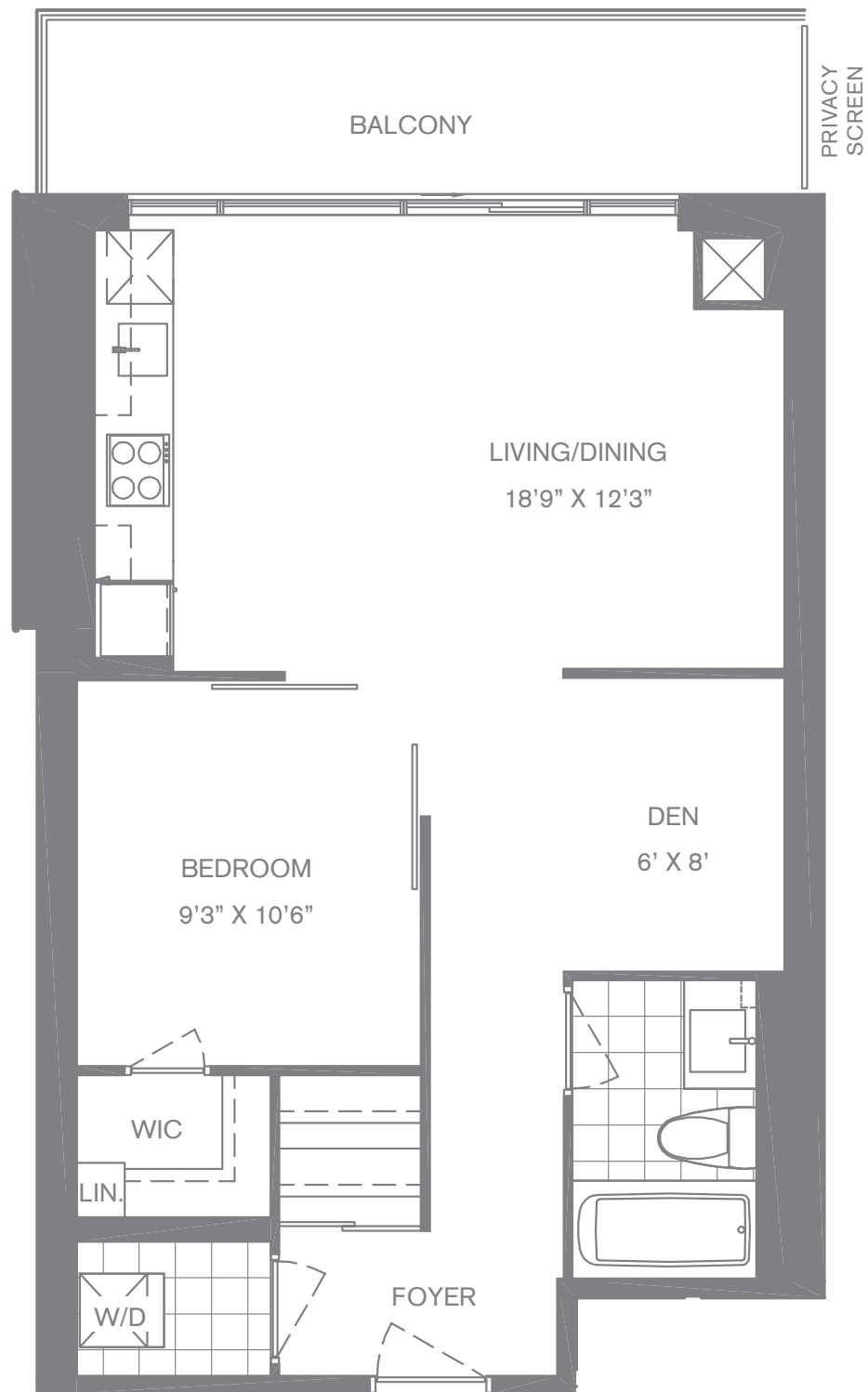


(1B+D-5)

Sizes and specifications are subject to change without notice. E.&O.E. Actual usable space may vary from any stated floor area. All dimensions are approximate and are subject to normal construction variances. Measurements of rooms set forth on any floor plan may be taken at the widest points of each given room (as if the room were a perfect rectangle), without regard for any cutouts. Floor measurements were calculated on the middle floor of typical floor plates.

THE PROUST 659 SQ. FT.

ONE BEDROOM + DEN + BALCONY (85 SQ.FT.)



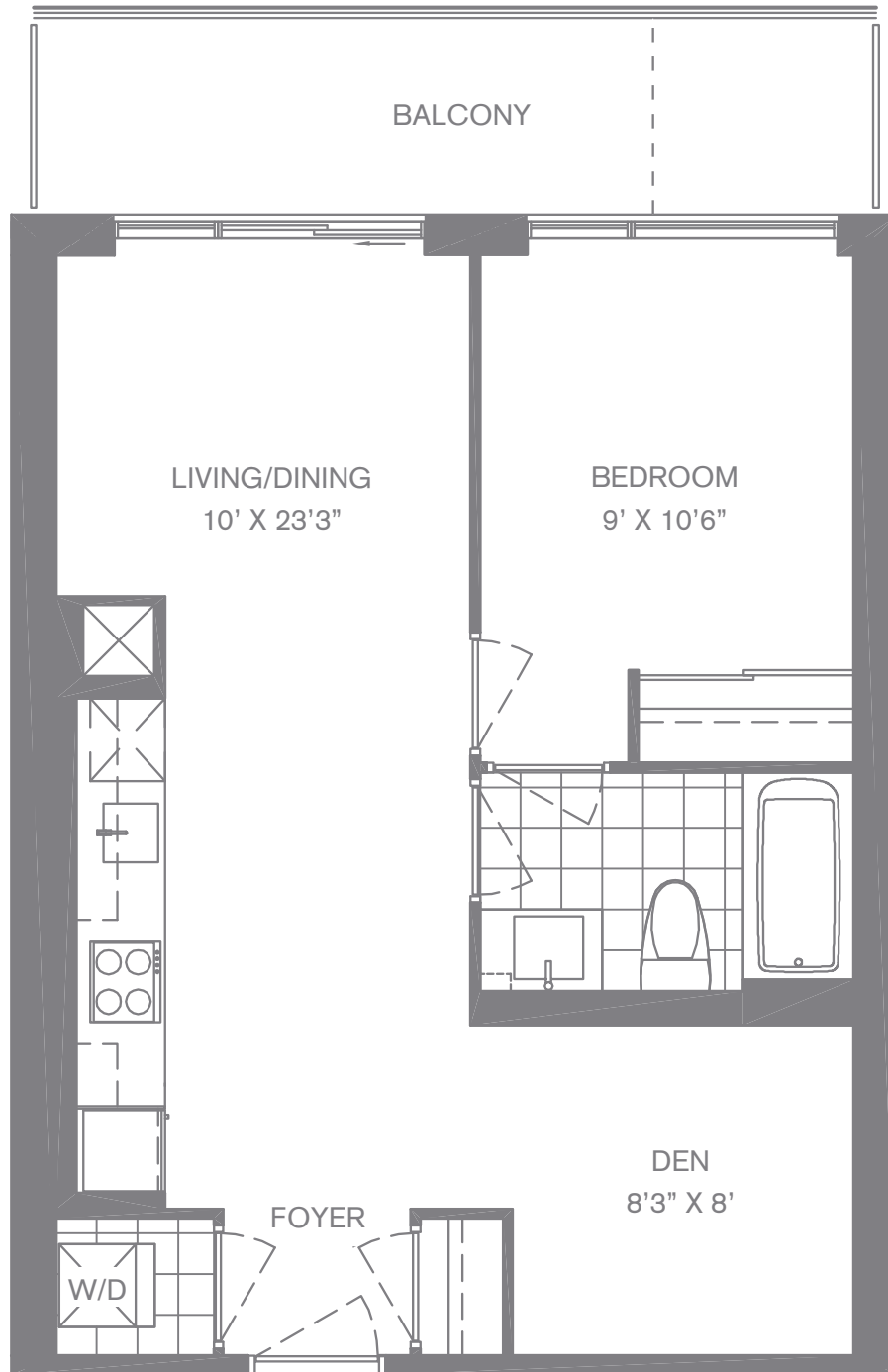
(1B+D-2)

Sizes and specifications are subject to change without notice. E.&O.E. Actual usable space may vary from any stated floor area. All dimensions are approximate and are subject to normal construction variances. Measurements of rooms set forth on any floor plan may be taken at the widest points of each given room (as if the room were a perfect rectangle), without regard for any cutouts. Floor measurements were calculated on the middle floor of typical floor plates.

THE URQUHART 570 SQ. FT.

ONE BEDROOM + DEN + BALCONY (80 SQ.FT.)
BALCONY (55 SQ.FT. FOR FLOORS 11-23)

LINE OF BALCONY @ 11TH-23RD FLOORS
SOME BALCONIES (55 SQ. FT.)



(1B+D-6)

Sizes and specifications are subject to change without notice. E.&O.E. Actual usable space may vary from any stated floor area. All dimensions are approximate and are subject to normal construction variances. Measurements of rooms set forth on any floor plan may be taken at the widest points of each given room (as if the room were a perfect rectangle), without regard for any cutouts. Floor measurements were calculated on the middle floor of typical floor plates.